



top of tail

FFF Eagle

56" Wingspan

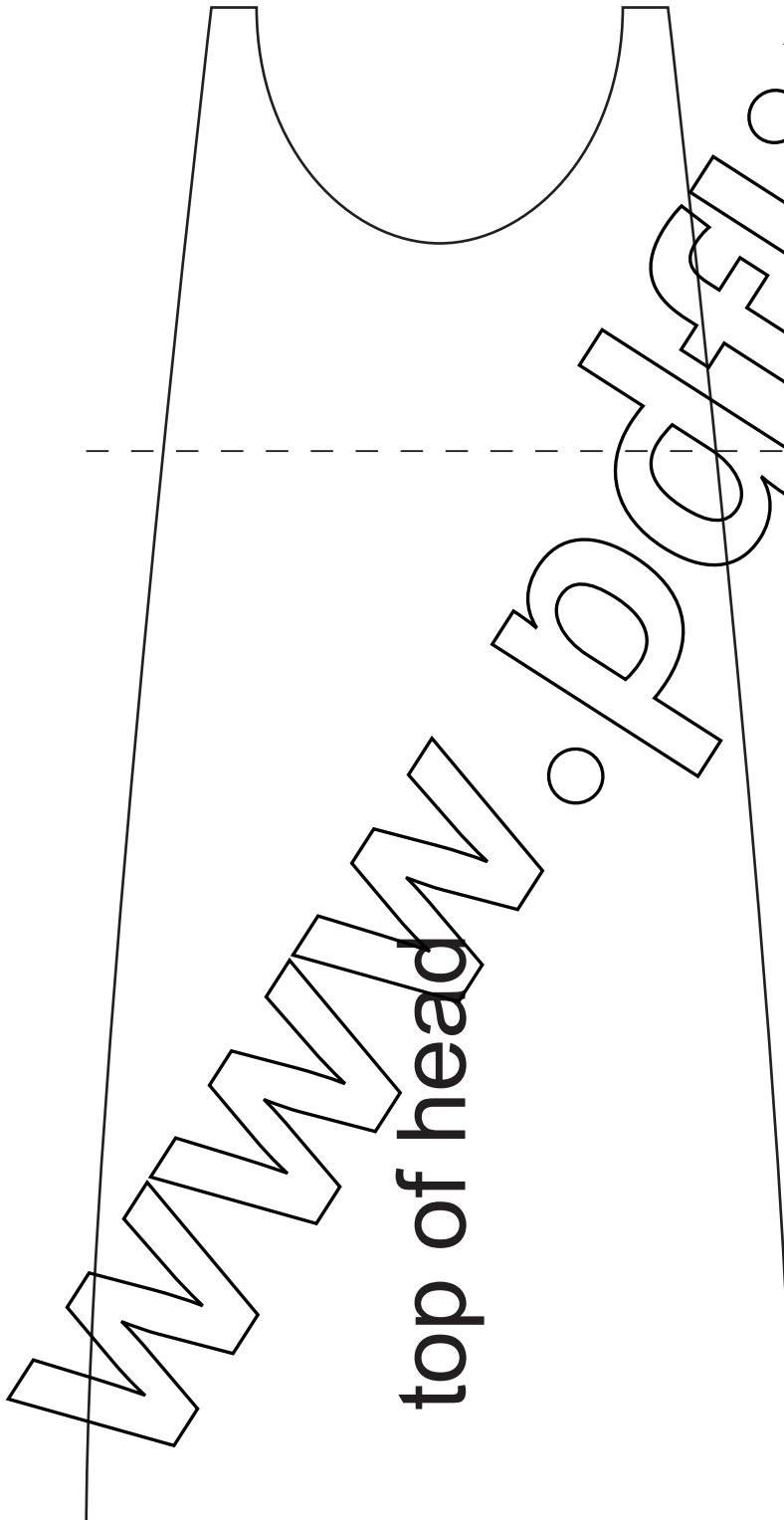
5mm (.2") thickness

www.pdf

head doublers

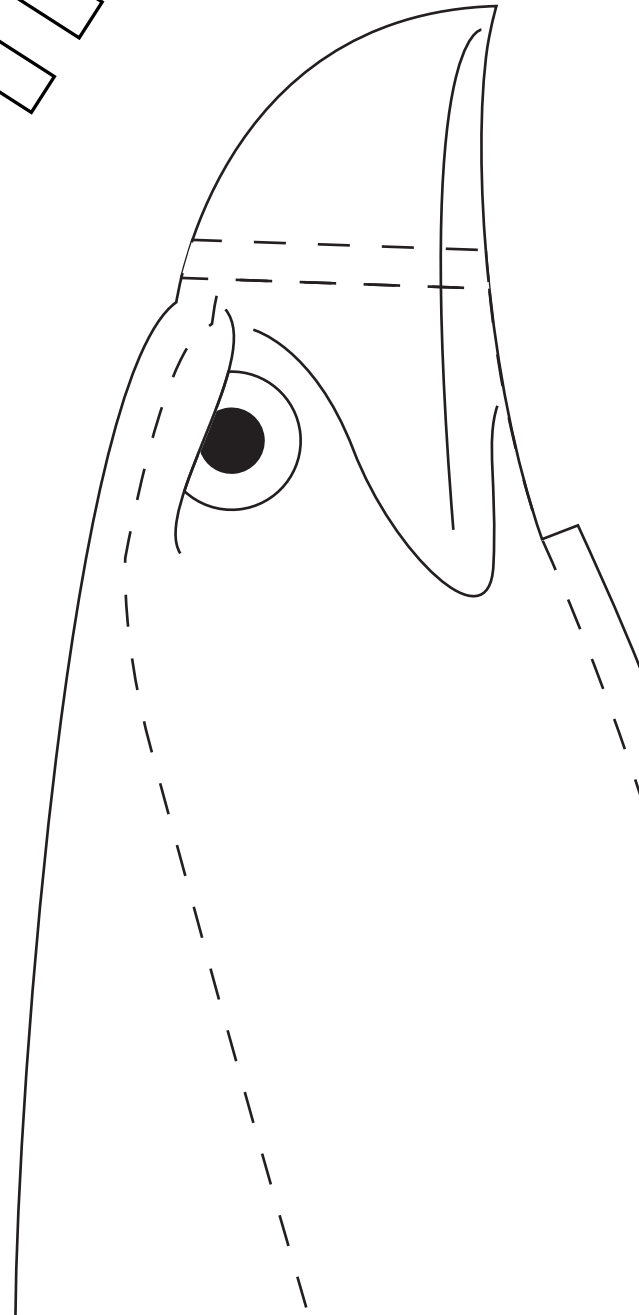
pdf

pdf.com



top of head

www.petfilib.com



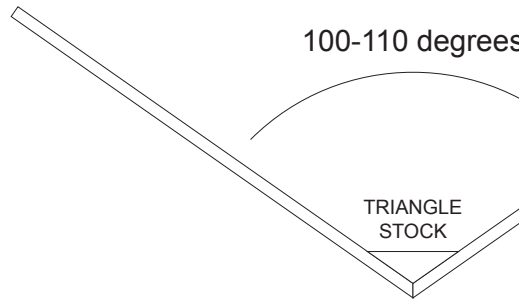
SS

www.petlib.com

www.pdfjib.com

bottom

ply reinforcement

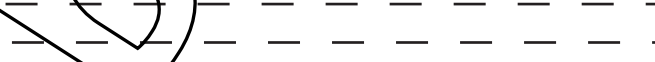
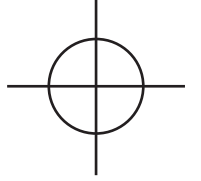


www.pdflib.com

ply reinforcement

www.pdfFiller.com

www.pdfFiller.com



t

op

www.pdflib.com

t

4 degrees dihedral (about 1.5" each

www.pdflib.com

glue spar to bottom of lay

www.pdfjib.com

Optional ailerons

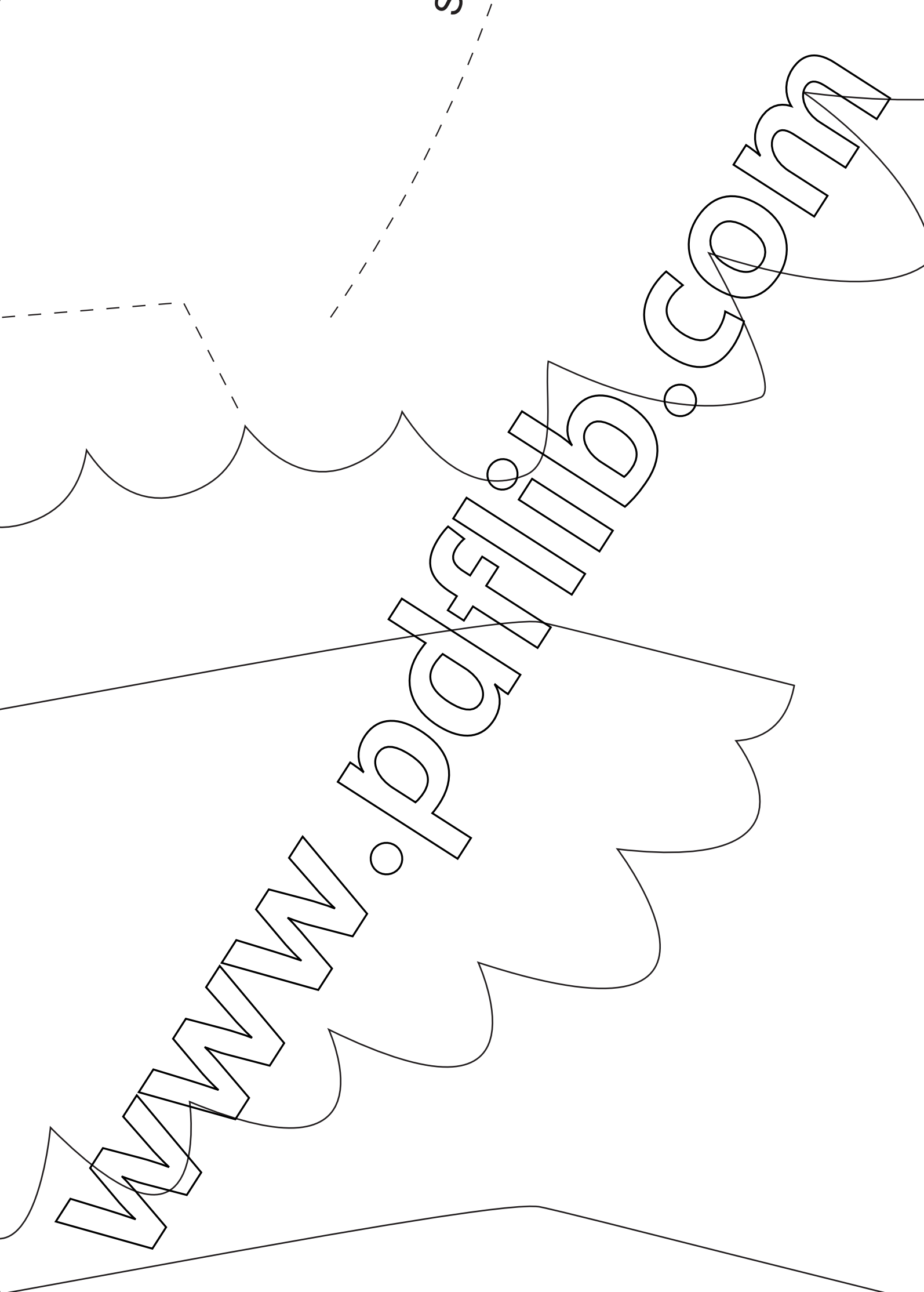
www.pdflib.com

wing)

www.pdflib.com

ver 2

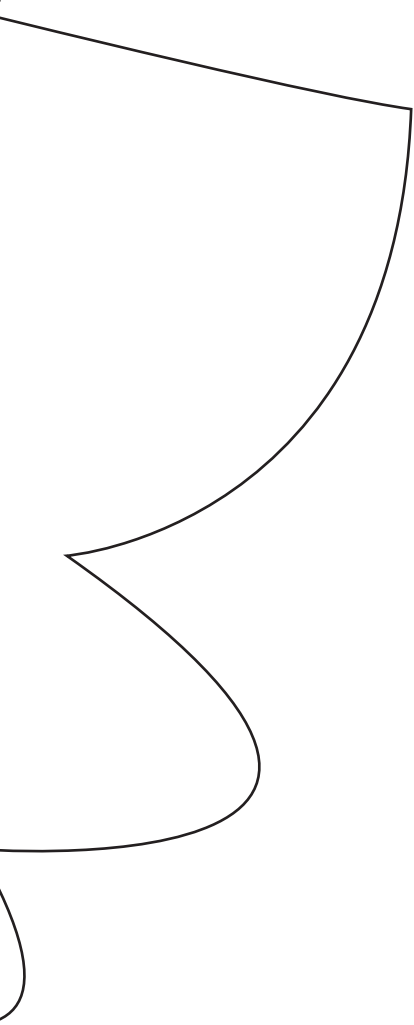
www.pdflib.com



www.pdfjib.com

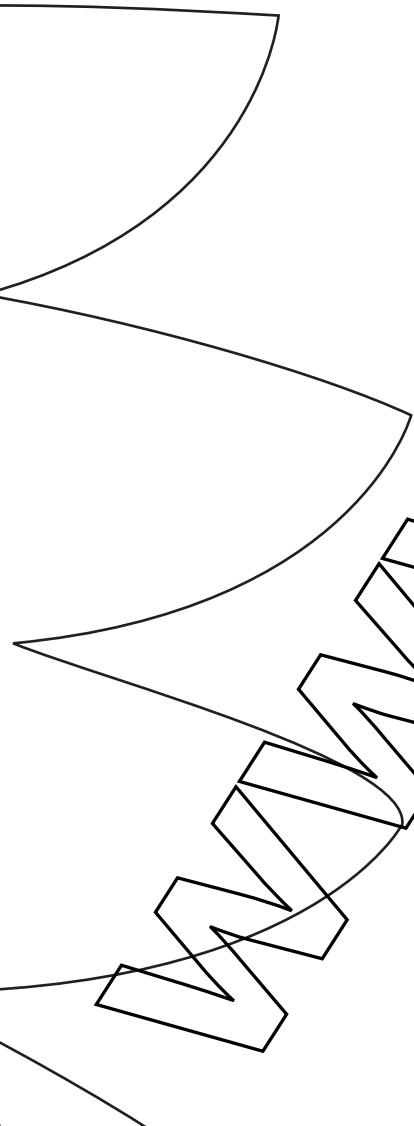
www.pdflib.com

SCORE AND FOLD



www.pdflib.com

www.pdfjib.com



www.pdflib.com